

ART MOB

Aboriginal Fine Art

Euan Hills
Gallery Director

29 Hunter Street
Hobart 7000
Tasmania Australia
In the Henry Jones IXL
precinct

P +61 3 6236 9200
F +61 3 6236 9300
M 0419 393 122
E euan@artmob.com.au
W www.artmob.com.au

APRIL 2017



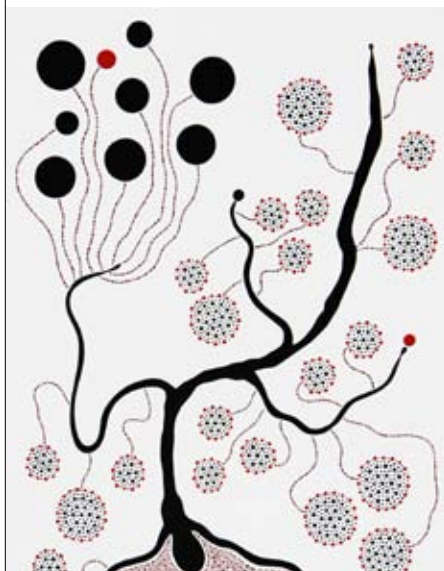
NAMATJIRA LEGACY TRUST



Lenie Namatjira and Gloria Pannka, on behalf of the Namatjira family, have recently signed a trust document which officially launched the Namatjira Legacy Trust. This historical occasion is the result of many years of work by devoted companies and individuals. It highlights the problematic current ownership of the copyright of Albert Namatjira's works and will now provide a means to return the copyright to the Namatjira family and raise much needed funds. Art Mob has supported the Hermannsburg school of artists for many years.

JULIAN OATES

Local Tasmanian Aboriginal artist Julian Oates launches his fourth solo exhibition 'When I was born, Quela's Arrival' with Art Mob on Thursday 6th of April. You will find his pieces in the Vodafone Events Centre Public Art Collection in New Zealand and other key private art collections. His abstract paintings are highly sought after and won't last long! Come along and support our local artist.



NEW WORKS

Our new Wandjina paintings by Regina Karadada have arrived along with limited prints by the Karadada family. Reuben Oates has delivered a few of his Tasmanian animal paintings and is quickly becoming one of Art Mob's most popular artists. Euan couldn't go to Alice Springs without bringing home a few gems including a really exciting Evelyn Pultara! We also have a couple of 2000-2003 Minnie Pwerle's, a platypus head by Mick Quilliam, a reload of our 30 x 30cm paintings and limited edition skate decks by Alick Tipoti and Dennis Nona. Check out our Stock Works pages showcasing our new pieces.



KUDDITJI FUNERAL

Art Mob has stocked the late Kudditji's paintings continuously since launching 15 years ago. Despite never having met the artist, Euan felt compelled to attend his funeral in Alice Springs early in March. It was a very moving occasion and the end of an era for one of Australia's greatest colourfield artists. His paintings, depicting vegetation growth after bushfire, were often likened to Rothko.

LURITJA LADIES

We are delighted to launch a fascinating exhibition in May by our favourite Luritja ladies. The Luritja lands include areas to the west and south of Alice Springs, extending around the edge of Arrernte country. Featured artists include Pansy Napangardi, Fabrianne Nampitjinpa Peterson, Mavis Nampijinpa, Lilly Kelly Napangardi & a few more - it will be a show not to miss!



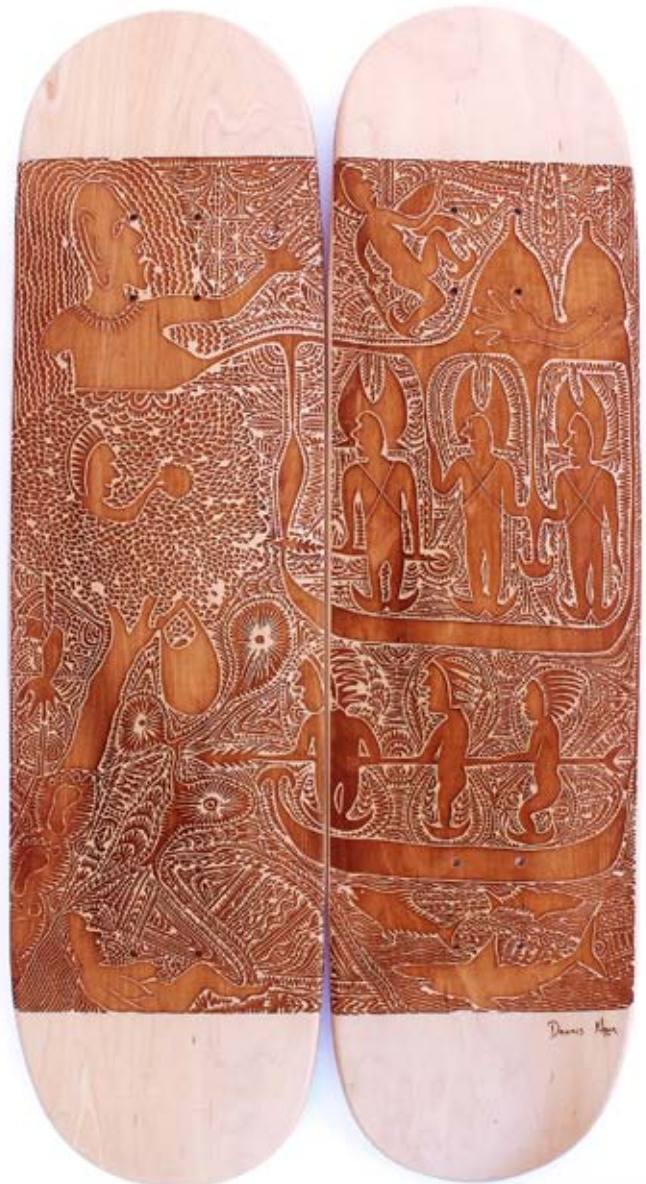
SKATE DECKS



SDAT016/08 Alick Tipoti *Gabu Aimai Mabaigal* 08/10 2008
Laser Cut Skatedeck 800 x 200 x 25mm \$750



SDAT039/04
Alick Tipoti
Waru Thurul 4/10 2008
Laser Cut Skatedeck
800mm H x 200mm W x 25mm D (each)
\$1500



SDDN021/06
Dennis Nona
Zurath Aw Dogai #06/10 2008
Laser cut skateboards
800 x 200mm x 2
\$1500