

ART

MOB

Aboriginal Fine Art

Euan Hills
Gallery Director

29 Hunter Street
Hobart 7000
Tasmania Australia
In The Henry Jones
Art Hotel complex

P +61 3 6236 9200
F +61 3 6236 9300
M 0419 393 122
E euan@artmob.com.au
W www.artmob.com.au

Oct '06



New discovery

Check out the new works by Cameron Ross on the back page. His works caused quite a stir with visiting academics in Alice Springs recently. Working with a range of dotting tools from toothpicks to fine brush he creates the most incredible fine work.



Bill Harney visit

Yidumduma Bill Harney will visit some schools in Tasmania late in October along with local artist Allan Mansell. No doubt, Bill will entertain and enlighten us in the gallery as he paints another Wardaman masterpiece or two.

Desert Mob

Tainted? What rubbish gets written by biased or ill-informed journalists. This exhibition of 440 works from some 35 desert communities at the Araluen Art Centre in Alice Springs is absolutely fabulous! They were so good that despite the feeding frenzy of those who rushed the doors Euan managed to purchase 3 lovely smaller works. He came back with heaps more from Malcolm Jagamarra, Marilyn Davies, William Sandy, Dorothy Napangardi, Mitjili Naparulla & Kudditji Kngwarreye – all are now available on our website.

Introduction to Aboriginal art class – book in for Thursday October 26th at 7pm. No charge.

Wangkatjungka exhibition

It is 100 years this year since the first white people entered the country of The Great Sandy Desert. They were the part of Canning's first survey team of 1906, looking to find a series of waterholes that could be opened up as wells to create the Canning Stock Route, between Wiluna in the south and Billuna in the north. The story of the Canning Stock Route is the story of first contact between white settlers and the people of the Great Sandy Desert. This story is in the oral tradition of families of the artists who are exhibiting, and many of the waterholes are part of, or adjacent to, the Canning Stock Route. Although it was not greatly used, the stock that did travel down this track had a profound effect on the traditional people. The first sightings of goats, camels, mules, horses and cattle caused great interest in the ways of the white people. Enjoy this exhibition launching on Friday October 6.



Sally Gabori

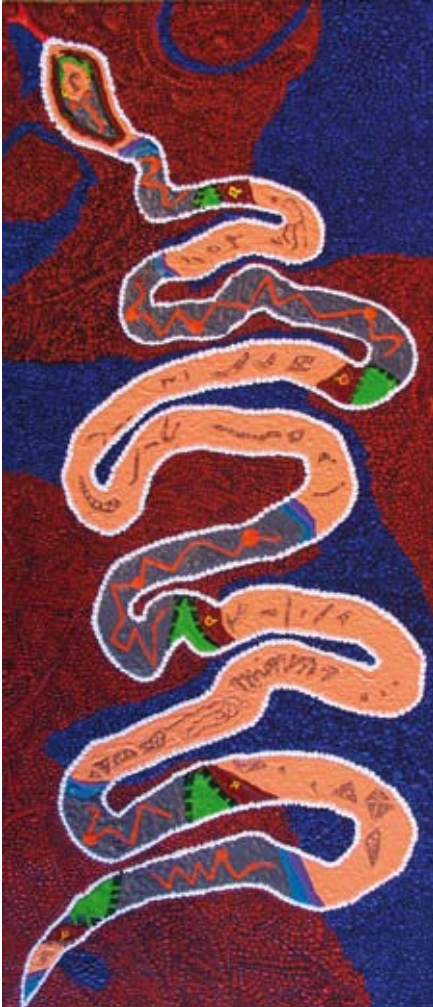
As promised last month The Tail End of Sally's Fish is currently hanging in the gallery and can also be viewed on our website at www.artmob.com.au. Her fame continues. She was short listed for the prestigious 2006 ABN AMRO Emerging Artist Award recently. Choose quickly from the last of her fish paintings!

Tiwi Island sculptures

In the gallery you can preview some items from Euan's recent trip to Jilamara Arts, Tiwi Islands. This important exhibition opens next month. Don't miss it!



Cameron Ross

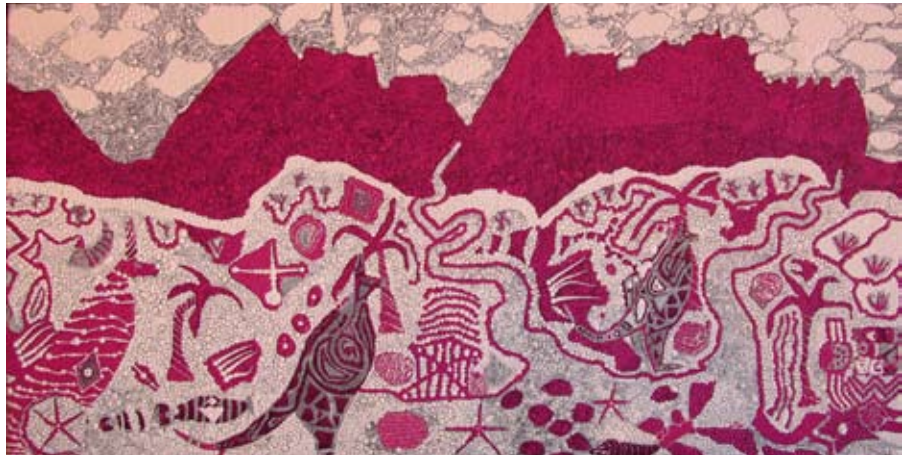


Cameron Ross's paintings were spotted by Euan when visiting Alice Springs a few months ago. His last visit saw these works purchased and Cameron is now painting directly for Art Mob. Obviously, seeing an albino kangaroo made a big impression on the artist. What else did he see?

6 AM 4362/06
Cameron Ross *Alien Man* 2006
Acrylic on linen 495 x 980mm \$2750

1 AM 4357/06
Cameron Ross *Yipparrinya Story* 2006
Acrylic on linen 300 x 700mm \$1900
"This is a Rainbow Serpent and many people around Alice Springs know this story - it is a sacred one which cannot be explained".

5 AM 4361/06
Cameron Ross *Yipirinya - The White Kangaroo* 2006
Acrylic on linen 980 x 500mm \$2750
"While riding on horseback my cousin and I amazingly came across the white kangaroo out Arltunga way, East Yipirinya".



2 AM 4358/06
Cameron Ross
Yipirinya - The White Kangaroo 2006
Acrylic on linen 400 x 490mm \$1500
"Yipirinya, towards the East, Arltunga way my cousin and I came across the white kangaroo".



3 AM 4359/06
Cameron Ross
Yipirinya - The White Kangaroo 2006
Acrylic on linen 400 x 490mm \$1500
"Yipirinya, towards the East, Arltunga way my cousin and I came across the white kangaroo".



4 AM 4360/06
Cameron Ross
Yipirinya - The White Kangaroo 2006
Acrylic on linen 400 x 490mm \$1500
"Yipirinya, towards the East, Arltunga way my cousin and I came across the white kangaroo".