

ART

MOB

Aboriginal Fine Art

Euan Hills
Gallery Director

29 Hunter Street
Hobart 7000
Tasmania Australia
In The Henry Jones
Art Hotel complex

P +61 3 6236 9200
F +61 3 6236 9300
M 0419 393 122
E euan@artmob.com.au
W www.artmob.com.au

MAY '08



Janet Long Nakamarra

For those of you who made friends with Janet last January you will be fascinated with some of her new bold and colourful body paint and underground water dreamings. She just gets better & better!



Dennis Nona Stingrays

His latest sculpture is superb! Again, a limited edition of 12 works, these are priced at \$52,500. For those of you who wisely bought a Muturu Goiga (red sun) etching he has now just released a blue Wati Kisai (bad moon) print that tells the story of kids having to protect their eyes from the full moon.



Options for receiving newsletter

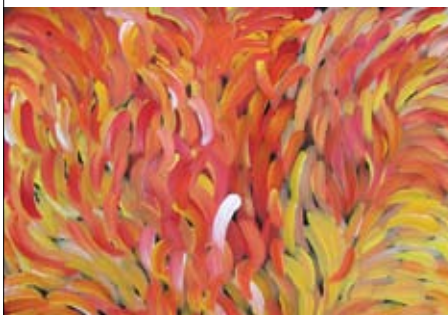
In an effort to conserve resources the gallery now offers an e-mail version of the newsletter and exhibition invitation. You will continue to receive a posted version by Australia Post unless you tell us that you would prefer an e-mail version. Just e-mail your details to us and we'll make the changes.

Monet's cataracts

Thanks to all of you who wished me well with the recent cataract surgery. Left eye is now seeing brilliantly and settling in to its new optics. Right eye should get done next month. So if you no longer have to wear sun glasses get your eyes checked! Google Monet & cataracts and you'll discover some interesting facts.

Utopia paintings

Euan went in search of both old and new talent at Dacou Gallery in Adelaide and came back with a veritable treasure trove of work some of which feature on the back page. There are some delightful Minnie, Emily & Galya Pwerle's and some very bold, large brushstroke Gloria Petyarre's along with paintings by new artists Freddy Purla and Raymond Walters.



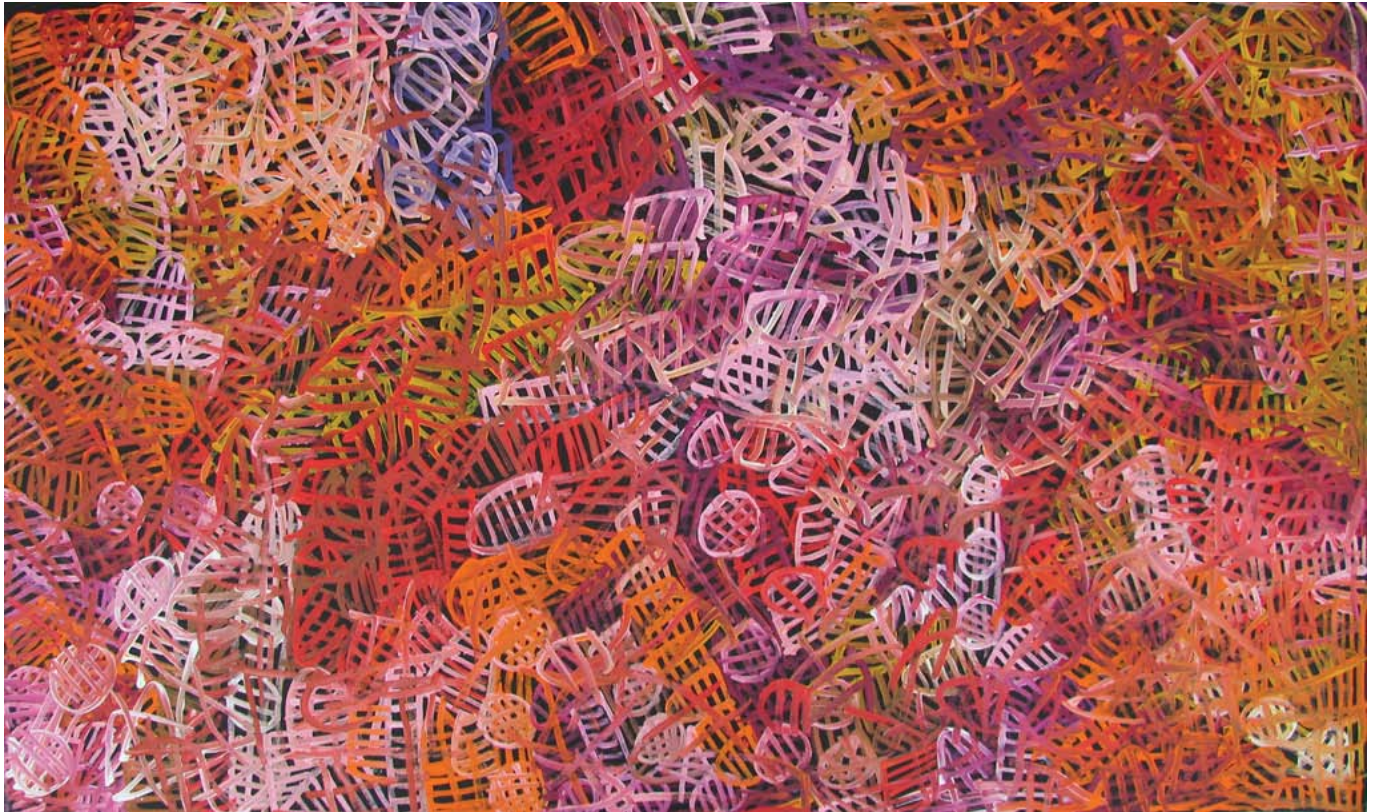
A Dotty Duo

All things being equal Fabrianne should be here to demonstrate her fascinating technique at the launch of our new exhibition. Pansy regrettably is not well and won't be present. The paintings by these 2 ladies certainly form a great body of work. Don't miss it!



Ochres

Oh for an Ochre is our current interim exhibition with 7 new works in from the Warmun Art Centre in the East Kimberley. Big names – Mabel Juli, Patrick Mung Mung and Betty Carrington feature along with Yvonne Martin and David Cox. Check them out on our web site or visit the gallery.



AM 5733/08
Emily Pwerle Awelye Athwengerrp 2008
Acrylic on cotton 1190 x 2000mm \$12300



AM 5735/08
Freddy Purla Scorpion Dreaming 2008
Acrylic on linen 910 x 1220mm \$3700



AM 5746/08
Minnie Pwerle Awelye Athwengerrp 2002
Acrylic on linen 1220 x 600mm \$9000



AM 5750/08
Raymond Walters Emu Feathers 2008
Acrylic on linen 890 x 1230mm \$3500