

ART MOB

Aboriginal Fine Art

Euan Hills
Gallery Director

29 Hunter Street
Hobart 7000
Tasmania Australia
In The Henry Jones
Art Hotel complex

P +61 3 6236 9200
F +61 3 6236 9300
M 0419 393 122
E euan@artmob.com.au
W www.artmob.com.au

Apr '07



New Desert stock

2006 Telstra General Painting award winner Linda Syddick has excelled with some new stock works depicting the medicine man's encounter with the windmill when moving east some decades ago. Other new stock has come in from Betsy Napangardi Lewis, a Yuendumu Warlpiri artist and 3 of her works feature on the reverse of this newsletter. Euan feels that Betsy is a great artist whose work has been underestimated.



Bill Harney Visit

We were honoured to have Wardaman elder Yindumduma Bill Harney come to Hobart and open our Highlights exhibition in early March to celebrate five years of Art Mob.

Bill spent the week painting in the IXL Atrium with ochres that he brought from his home country. Patrons from the cafes were entertained with his didgeridoo playing and he quickly sold all stock copies of his biography *Born Under the Paperbark Tree*. Bill's new works can be found under Artists on our website.

Absolute Solitude

Mick Quilliam's solo April exhibition will be hung just before Easter and launches officially on April 13. These works will be in big demand so get in early! Some works are already available on our web site.



William Sandy biggest painting

Papunya artist William Sandy has just completed painting his biggest work ever for Art Mob. His *Dingo Dreaming* is 3 metres high and 6 metres long and will need a special home. Apply to Euan for further details.

Stock works pages

You will notice that the stock works pages on our web site are in the process of being reloaded. You can browse through some 1400 works ranging from A4 West Arnhem Land ochre paintings on Arches paper to some very valuable special works. It tells an interesting chronological evolution.

Papunya Tula: Genesis & Genius

We have secured a few copies of the highly sought after catalogue of the Art Gallery of NSW's exhibition from 2000. They are the hard cover version and are priced at \$360 plus \$15 postage.



Introduction to Aboriginal art class, Thursday
26th April, 7pm, It's free but please book!

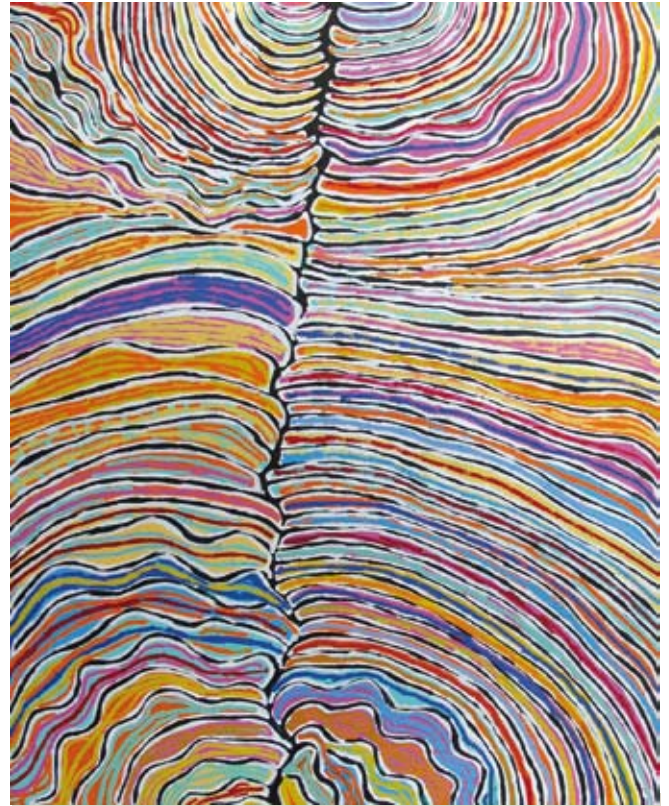
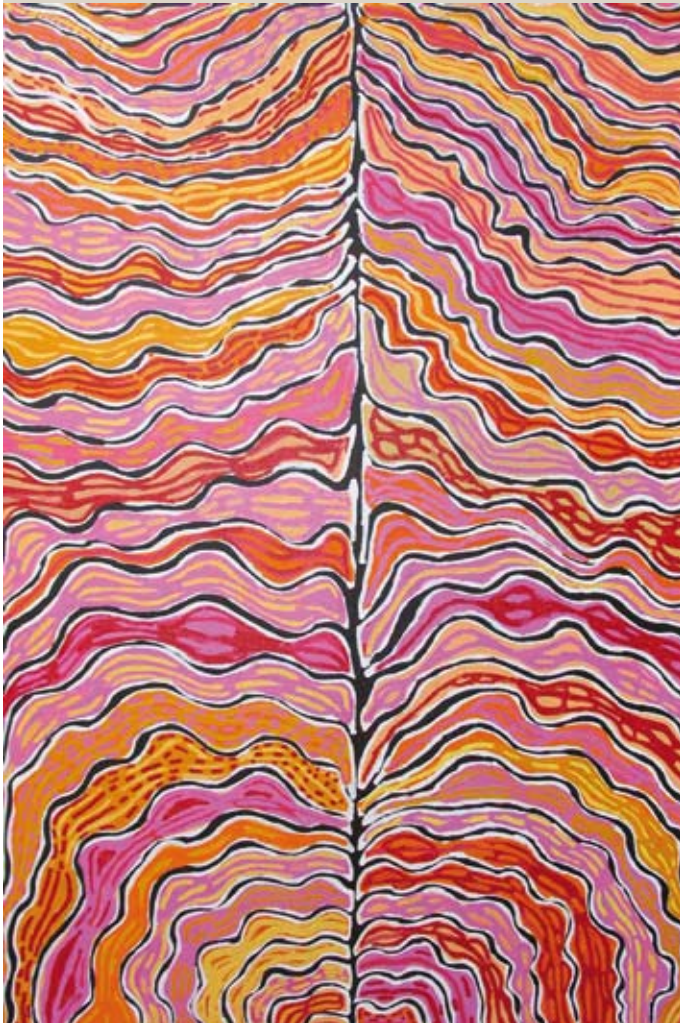
Betsy Napangardi Lewis

AM 4932/07

Mina Mina Jukurpa (Mina Mina Dreaming) 2005

Acrylic on linen 1830 x 1220mm \$10300

The country associated with this painting is Mina Mina, a place far west of Yuendumu, significant to Napangardi and Napanangka women who are the custodians of the Dreaming that created the area. The Dreaming describes the journey of a group of women of all ages who travelled east gathering food, collecting Ngalyipi (*Tinospora smilacina* or snake vine) and performing ceremonies as they travelled. The women began their journey at Mina Mina where karlangu (digging sticks) emerged from the ground. Taking these implements the women travelled east creating Janyinki and other sites. Their journey took them eventually beyond Warlpiri country.



AM 4934/07

Mina Mina Jukurpa (Mina Mina Dreaming) 2006

Acrylic on linen 1520 x 1220mm \$7200

The country associated with this painting is Mina Mina, a place far west of Yuendumu, significant to Napangardi and Napanangka women who are the custodians of the Dreaming that created the area. The Dreaming describes the journey of a group of women of all ages who travelled east gathering food, collecting Ngalyipi (*Tinospora smilacina* or snake vine) and performing ceremonies as they travelled. The women began their journey at Mina Mina where karlangu (digging sticks) emerged from the ground. Taking these implements the women travelled east creating Janyinki and other sites. Their journey took them eventually beyond Warlpiri country.

AM 4933/07

Mina Mina Jukurpa (Mina Mina Dreaming) - Ngalyipi 2007

Acrylic on linen 910 x 760mm \$2700

The country associated with this painting is Mina Mina, a place far to the west of Yuendumu, which is significant to Napangardi and Napanangka women, the custodians of the Jukurpa that created the area. The Jukurpa story tells of the journey of a group of women of all ages who travelled to the east east gathering food, collecting Ngalyipi (*Tinospora smilacina* or snake vine) and performing ceremonies as they travelled. The women began their journey at Mina Mina where Karla-ngu (digging sticks) emerged from the ground. Taking these implements the women travelled east creating Janyinki and other sites. Their journey took them eventually beyond Warlpiri country. The central motif in this painting is the Ngalyipi vine, which grows up the trunks and limbs of the Kurrkara (Desert Oak, *Allocasuarina decasneana*) trees. Ngalyipi is a vine sacred to Napangardi and Napanangka women and has many uses, including as a ceremonial wrap, as a strap to carry Parrajas (wooden bowls) laden with bush tucker and as a tourniquet for headaches.

